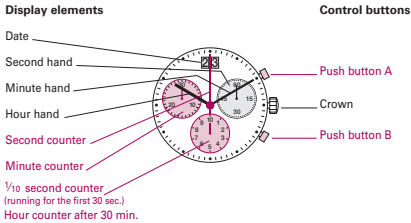


You have decided to buy a watch, which was assembled by a watchmaker using a Ronda movement. Please note that no watches are produced or distributed under the Ronda Brand.

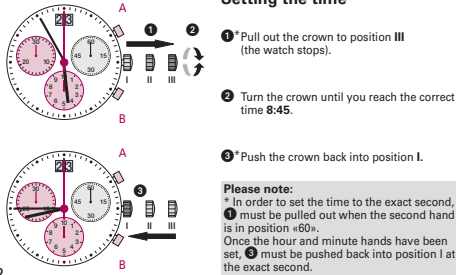
In case of repairs, guarantee claims and questions concerning the functioning of a watch, purchasers and consumers should contact their retailer or the watch manufacturer, for which the relevant information can be found in the sales or guarantee documentation provided with the watch.

Description of the display and control buttons



01

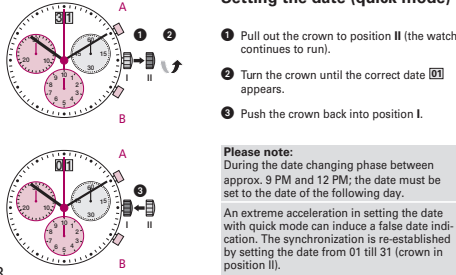
Setting the time



Please note:
* In order to set the time to the exact second, 1 must be pulled out when the second hand is in position «60».
Once the hour and minute hands have been set, 2 must be pushed back into position I at the exact second.

02

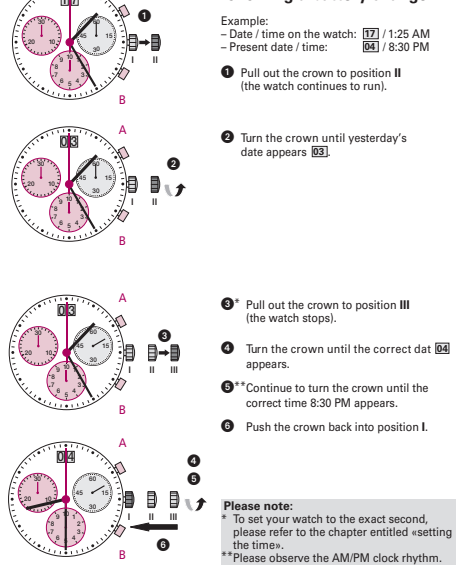
Setting the date (quick mode)



Please note:
During the date changing phase between approx. 9 PM and 12 PM; the date must be set to the date of the following day.
An extreme acceleration in setting the date with quick mode can induce a false date indication. The synchronization is re-established by setting the date from 01 till 31 (crown in position II).

03

Setting the date/time following a battery change



Please note:
* To set your watch to the exact second, please refer to the chapter entitled «setting the time».
** Please observe the AM/PM clock rhythm.

04

Chronograph: Basic function

(Start / Stop / Reset)

Example:

- Start:** Press push-button A.
- Stop:** To stop the timing, press push-button A once more and read the chronograph hands: **4min/38sec/7/10 sec**
- Zero positioning:** Press push-button B. (The chronograph hands will be reset to their zero positions.)

05

Chronograph: Accumulated timing

Example:

- Start:** (start timing)
 - Stop:** (e.g. 15 min 5 sec following 1)
 - Restart:** (timing is resumed)
 - Stop:** (e.g. 5 min 12 sec following 3) = **20 min 17 sec**
(The accumulated measured time is shown)
 - Reset:** The chronograph hands are returned to their zero positions.
- Please note:**
* Following 4, the accumulation of the timing can be continued by pressing push-button A (Restart / Stop, Restart / Stop, ...).

06

Chronograph: Intermediate or interval timing

Example:

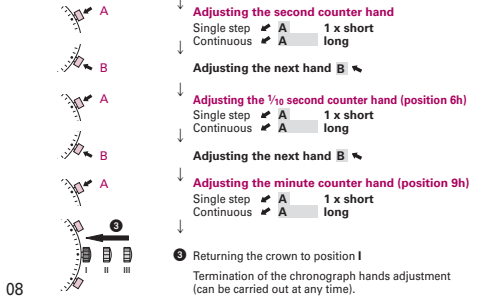
- Start:** (start timing)
 - Display interval:** e.g. 20 minutes 17 seconds (timing continues in the background)
 - Making up the measured time:** (The chronograph hands are quickly advanced to the ongoing measured time.)
 - Stop:** (Final time is displayed)
 - Reset:** The chronograph hands are returned to their zero position.
- Please note:**
* Following 4, further intervals or intermediates can be displayed by pressing push-button B (display interval / make up measured time, ...).

07

Adjusting the chronograph hands to zero position

Example:

- One or several chronograph hands are not in their correct zero positions and have to be adjusted (e.g. following a battery change).
- Pull out the crown to position III (all chronograph hands are in their correct or incorrect zero position).
 - Keep push-buttons A and B depressed simultaneously for at least 2 seconds (the second counter hand 360° → corrective mode is activated).



08

